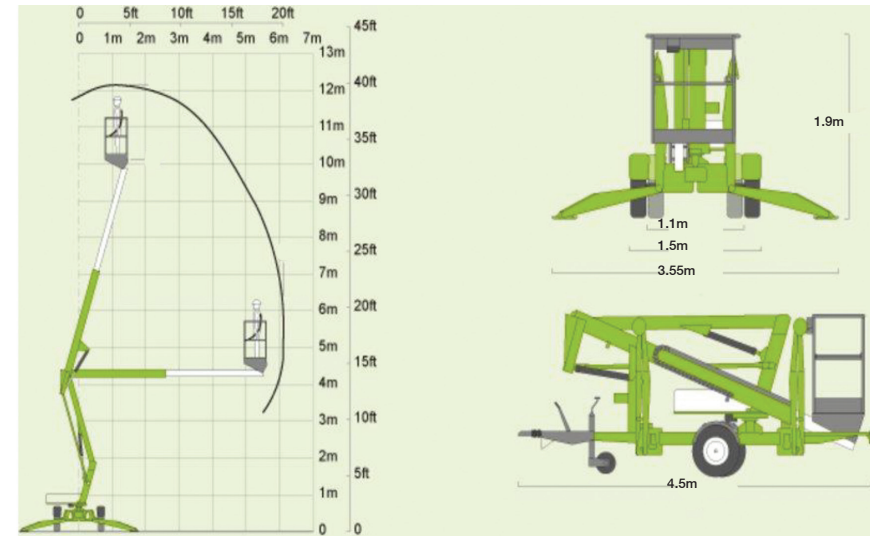


NIFTY 120T TRAILER MOUNT

PRODUCT SPECIFICATIONS

NIFTY LIFT

Specifications	
Engine	Petrol Powered
Working Height	12.2 m
Working Outreach	6.1 m
Minimum Weight	1,400 kg
Safe Working Load	200 kg
Telescopic Upper Boom and Axles	Greater accuracy when positioning platform, access through double doorway openings



DISCLAIMER: This Product Specification Sheet was produced 01/2020. Every effort has been made to ensure that the content is accurate, however the contents are subject to change. Information contained in this Specification Sheet is for general information only and does not purport to be comprehensive, current only at the time it is placed in this document compiled from manufacturer and industry sources; and not intended to provide nor make any recommendation upon which you should rely for any purpose whatsoever. Ezyquip Hire makes no warranty express or implied, including without limitation any warranty of merchantability or fitness for any particular purpose. Ezyquip Hire shall not be liable for any special, incidental, or consequential damages or loss of profits resulting from use of or misuse of the general information provided in this document.