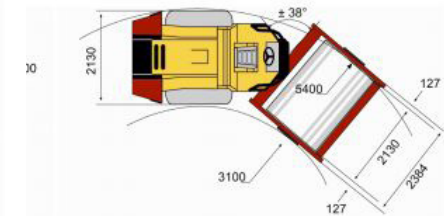
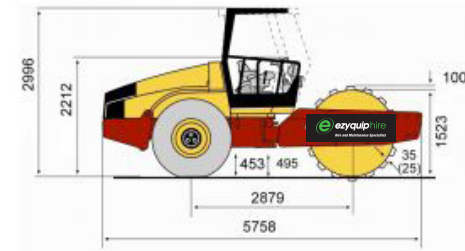


CA362D VIBRATORY ROLLER | 15T

PRODUCT SPECIFICATIONS

DYNAPAC

Type	Smooth Drum
Masses	
Maximum Operating Mass	15,350 kg
Traction	
Speed Range (km/ h)	0 - 9
Vertical Oscillation	±9°
Tyre Size (8 ply)	23,1x26
Theor. Gradeability	55
Compaction	
Static Linear Load	38.50 kg / cm
Nominal Amplitude (high/low)	1.70 mm / 0.80 mm
Vibration Frequency	33 Hz
Centrifugal Force (high amplitude/ low amplitude)	300 kN / 146 kN
Engine	
Manufacturer	Cummins
Model	QSB6.7 T3
Type	Water cooled turbo Diesel with After Cooler
Rated Power - SAE J1995	112 kW (150hp) @ 2200rpm
Fuel Tank Capacity	320 L
Fuel Burn	
Low	12.79 Litres per hour
Medium	17.58 Litres per hour
High	22.38 Litres per hour



DISCLAIMER: This Product Specification Sheet was produced 01/2020. Every effort has been made to ensure that the content is accurate, however the contents are subject to change. Information contained in this Specification Sheet is: for general information only and does not purport to be comprehensive, current only at the time it is placed in this document compiled from manufacturer and industry sources; and not intended to provide nor make any recommendation upon which you should rely for any purpose whatsoever. Ezyquip Hire makes no warranty express or implied, including without limitation any warranty of merchantability or fitness for any particular purpose. Ezyquip Hire shall not be liable for any special, incidental, or consequential damages or loss of profits resulting from use of or misuse of the general information provided in this document.