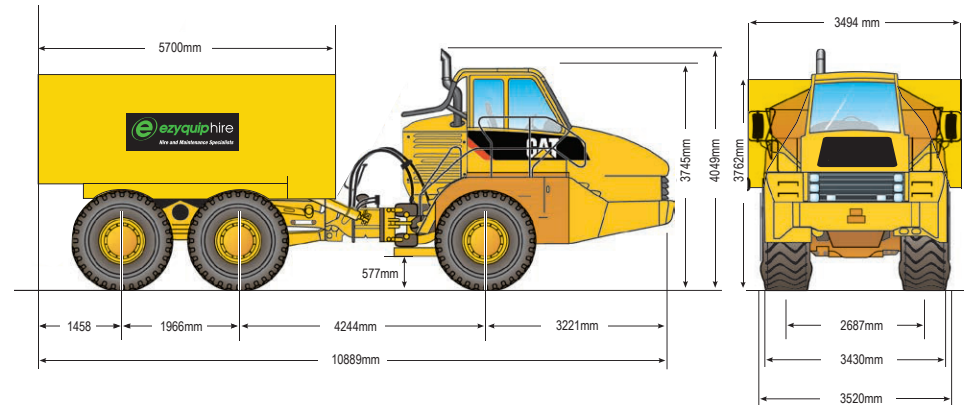


740B WATER TRUCK | 35,000L

PRODUCT SPECIFICATIONS

CAT

Engine	
Model	CAT C15 ACERT
Gross Power – SAE J1995	350 kW / 469 hp
Net Power – SAE J1349	338 kW / 453 hp
Net Power – ISO 9249	342 kW / 458 hp
Net Power – EEC 80/1269	342 kW / 458 hp
Flywheel Power	338 kW / 453 hp
Bore	137 mm / 5.4"
Stroke	171.5 mm / 6.75"
Displacement	15.2 L / 926" ³
Weights	
Front Axle - Empty	19,400 kg / 42,770 lb
Center Axle – Empty	7,200 kg / 15,873 lb
Rear Axle – Empty	6,500 kg / 14,330 lb
Total – Empty	33,100 kg / 72,973 lb
Front Axle – Rated Load	5,200 kg / 11,464 lb
Center Axle – Rated Load	17,150 kg / 37,809 lb
Rear Axle – Rated Load	17,150 kg / 37,809 lb
Total – Rated Load	39,500 kg / 87,083 lb
Front Axle – Loaded	24,600 kg / 54,234 lb
Center Axle – Loaded	24,350 kg / 53,683 lb
Rear Axle – Loaded	23,650 kg / 52,139 lb
Total – Loaded	72,600 kg / 160,055 lb



DISCLAIMER: This Product Specification Sheet was produced 01/2020. Every effort has been made to ensure that the content is accurate, however the contents are subject to change. Information contained in this Specification Sheet is for general information only and does not purport to be comprehensive, current only at the time it is placed in this document compiled from manufacturer and industry sources; and not intended to provide nor make any recommendation upon which you should rely for any purpose whatsoever. Ezyquip Hire makes no warranty express or implied, including without limitation any warranty of merchantability or fitness for any particular purpose. Ezyquip Hire shall not be liable for any special, incidental, or consequential damages or loss of profits resulting from use of or misuse of the general information provided in this document.