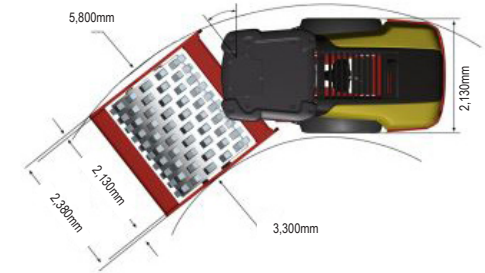
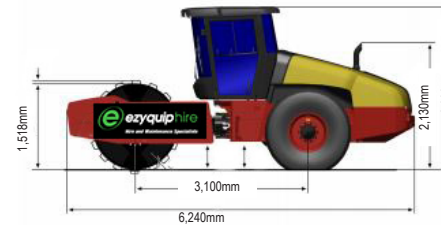


CA6500PD VIBRATORY ROLLER | 20T

PRODUCT SPECIFICATIONS

DYNAPAC

Type	Pad Foot
Masses	
Operating Mass (incl. Cab)	21,000 kg
Traction	
Speed Range (km/ h)	0 - 11
Vertical Oscillation	±9°
Tyre Size (12 ply)	23,1x26
Theor. Gradeability	56 %
Number of Pads	130
Pad Height	102 mm
Pad Area	146 cm ²
Compaction	
Centrifugal Force (high/low amplitude)	360 kN / 150 kN
Nominal Amplitude (high/low)	2.1 mm / 0.8 mm
Vibration Frequency (high/low amplitude)	29 Hz / 30 Hz
Engine	
Manufacturer / Model	Deutz TCD6, 1L6 (IIIB/4i)
Type	Water cooled turbo Diesel
Rated Power - ISO 14396	150 kW (204 hp) @ 2,200 rpm
Fuel Tank Capacity	272 L
Fuel Burn	
Low	16.98 Litres per hour
Medium	23.35 Litres per hour
High	29.72 Litres per hour



DISCLAIMER: This Product Specification Sheet was produced 01/2020. Every effort has been made to ensure that the content is accurate, however the contents are subject to change. Information contained in this Specification Sheet is: for general information only and does not purport to be comprehensive, current only at the time it is placed in this document compiled from manufacturer and industry sources; and not intended to provide nor make any recommendation upon which you should rely for any purpose whatsoever. Ezyquip Hire makes no warranty express or implied, including without limitation any warranty of merchantability or fitness for any particular purpose. Ezyquip Hire shall not be liable for any special, incidental, or consequential damages or loss of profits resulting from use of or misuse of the general information provided in this document.