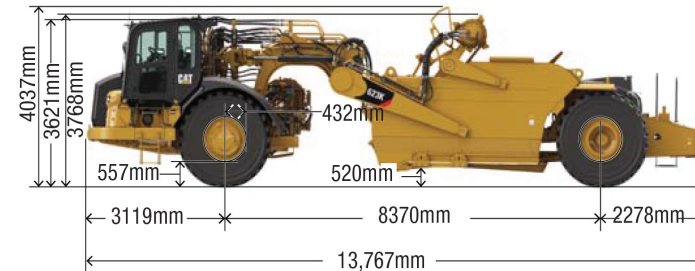
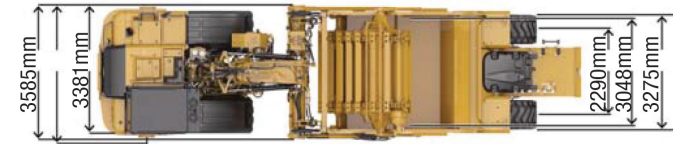


623K WHEEL TRACTOR SCRAPER | 40T

PRODUCT SPECIFICATIONS

CAT

| Engine | |
|---|--|
| Model | CAT C13 ACERT™ |
| Rated Engine RPM | 2,000 rpm |
| Flywheel Power | 304 kW / 407 hp |
| CAT C13 ACERT engine meets U.S. Environmental Protection Agency (EPA) Tier 4 Final/EU Stage IV engine emission standards. | |
| Weights | |
| Total Operating – Empty | 39,937 kg / 88,061 lb |
| Scraper Bowl | |
| Heaped Capacity | 17.6 m ³ / 23 yd ³ |
| Struck Capacity | 14.4 m ³ / 18.8 yd ³ |
| Rated Load | 25,038 kg / 55,200 lb |
| Maximum Depth of Cut | 262 mm / 10.3" |
| Width of Cut | 3.14 m / 10'4" |
| Maximum Depth of Spread | 465 mm / 18.3" |
| Transmission | |
| Top Speed (Loaded) | 53.9 km/h / 33.5 mph |
| Fuel Burn | |
| Low | 32.2 - 43.2 Litres per hour |
| Medium | 43.2 - 54.5 Litres per hour |
| High | 54.5 - 68.1 Litres per hour |



DISCLAIMER: This Product Specification Sheet was produced 01/2020. Every effort has been made to ensure that the content is accurate, however the contents are subject to change. Information contained in this Specification Sheet is for general information only and does not purport to be comprehensive, current only at the time it is placed in this document compiled from manufacturer and industry sources; and not intended to provide nor make any recommendation upon which you should rely for any purpose whatsoever. Ezyquip Hire makes no warranty express or implied, including without limitation any warranty of merchantability or fitness for any particular purpose. Ezyquip Hire shall not be liable for any special, incidental, or consequential damages or loss of profits resulting from use of or misuse of the general information provided in this document.