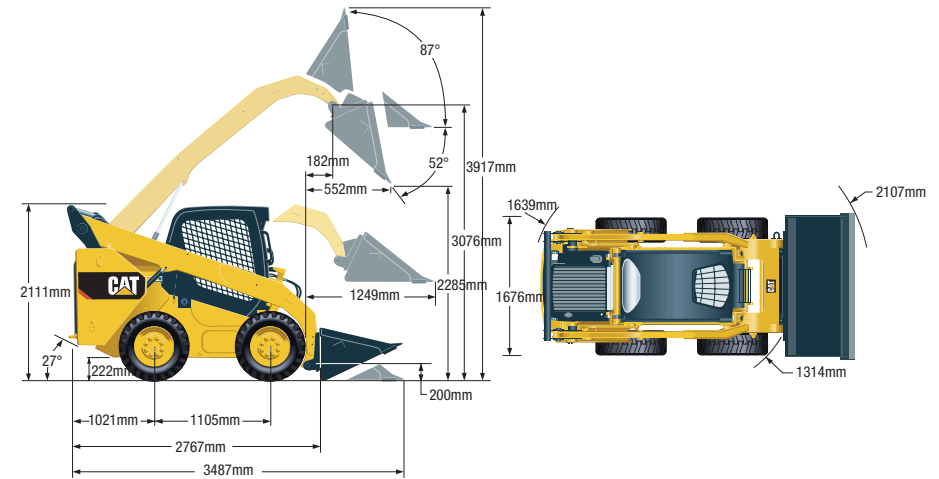


242D | 3T

PRODUCT SPECIFICATIONS

CAT

Engine	
Model	CAT C3.3B DIT (turbo)
Gross Power SAE J1995	55.4 kW / 74.3 hp
Net Power SAE 1349	54.6 kW / 73.2 hp
Net Power ISO 9249	55.1 kW / 73.9 hp
Peak Torque - At 1,500 rpm SAE J1995	265 Nm / 195 lbf-ft
Displacement	3.3 L
Bore	94 mm
Stroke	120 mm
Weights	
Operating Weight	3,166 kg
Operating Specifications	
Rated Operating Capacity	975 kg
Rated Operating Capacity with Optional Counterweight	1,066 kg
Tipping Load	1,950 kg
Breakout Force - Tilt Cylinder	2,283 kg
Fuel Burn	
Low	5.3 - 7.6 Litres per hour
Medium	7.6 - 9.9 Litres per hour
High	9.9 - 12.1 Litres per hour



DISCLAIMER: This Product Specification Sheet was produced 01/2020. Every effort has been made to ensure that the content is accurate, however the contents are subject to change. Information contained in this Specification Sheet is for general information only and does not purport to be comprehensive, current only at the time it is placed in this document compiled from manufacturer and industry sources; and not intended to provide nor make any recommendation upon which you should rely for any purpose whatsoever. Ezyquip Hire makes no warranty express or implied, including without limitation any warranty of merchantability or fitness for any particular purpose. Ezyquip Hire shall not be liable for any special, incidental, or consequential damages or loss of profits resulting from use of or misuse of the general information provided in this document.