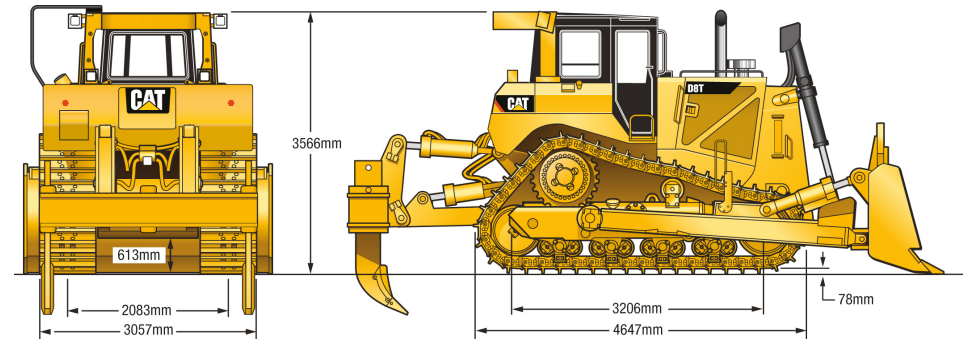


D8T DOZER | 39T

PRODUCT SPECIFICATIONS

CAT

Engine			
Model	CAT C15 ACERT		
Max Gross Power - SAE J1995 (1700 rpm)	271 kW / 363 hp		
ISO 14396	268 kW / 359 hp		
Net Power - SAE J1349/ ISO 9249	233 kW / 312 hp		
Bore	137 mm		
Stroke	172 mm		
Displacement	15.2 L		
Weights			
Operating	39,420 kg		
Transmission			
1st Forward	3.4 km/h	1st Reverse	4.5 km/h
2nd Forward	6.1 km/h	2nd Reverse	8 km/h
3rd Forward	10.6 km/h	3rd Reverse	14.2 km/h
Blades			
Type	8SU		
Capacity (SAE J1265)	8.6 m ³		
Width (over end bits)	3,931 mm		
Height	1,690 mm		
Digging Depth	511 mm		
Ground Clearance	1,310 mm		
Maximum Tilt	861 mm		
Weight* (without hydraulic controls)	4,260 kg		
Total operating weight** (with blade and single shank ripper)	39,420 kg		
Fuel Burn			
Low	23.7 - 34.3 Litres per hour		
Medium	34.3 - 44.2 Litres per hour		
High	44.2 - 54.2 Litres per hour		



With the following attachments add (length):

Ripper – Single Shank (with tip at ground line)	1519 mm	A Blade (not angled)	2027 mm
Ripper – Multi Shank (with tip at ground line)	1613 mm	A Blade (angled 25 degrees)	3068 mm
SU Blade	1844 mm	Drawbar	406 mm
U Blade	2241 mm		