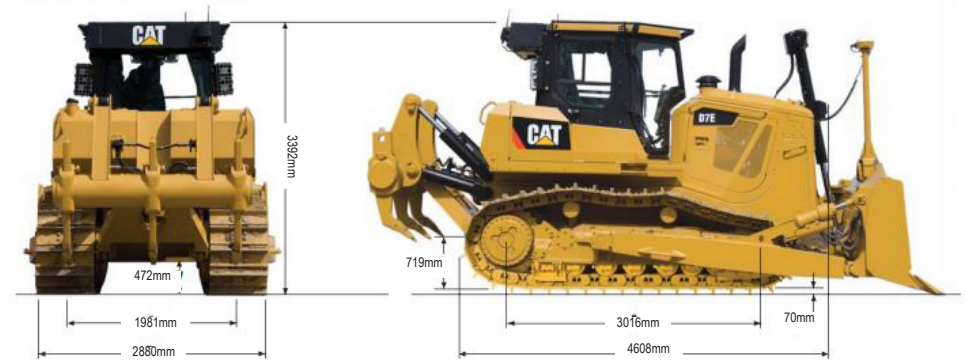


D7E TRACK-TYPE TRACTOR | 26T

PRODUCT SPECIFICATIONS

CAT

Engine	
Model	CAT C9.3 ACERT
Engine Power - SAE J1995	201 kW / 270 hp
Engine Power - ISO 14396	198 kW / 266 hp
Engine Power - ISO 14396 (DIN)	270 hp
Net Power (Rated) - SAE J1349/ ISO 9249	175 kW / 235 hp
Net Power (Rated) - SAE J1349/ ISO 9249 (DIN)	238 hp
Net Power (Maximum) - ISO 9249/SAE J1349	187 kW / 251 hp
Net Power (Maximum) - ISO 9249/ SAE J1349 (DIN)	254 hp
Bore	115 mm / 4.5"
Stroke	149 mm / 5.9"
Displacement	9.3 L / 567 ³
Weights	
Operating	26,055 kg / 57,441 lb
Drive Train	
Type	Electric Drive
AC Compressor - Nominal input voltage	320 volts
AC Compressor - Maximum input current	12 Amps
Electric Water Pump System - Nominal input voltage	320 volts
Electric Water Pump System - Nominal input current	5 Amps
AC Generator and Propulsion Module - Voltage	480 volts
Fuel Burn	
Low	14.8 - 20.8 Litres per hour
Medium	20.8 - 27.2 Litres per hour
High	27.2 - 34.5 Litres per hour



DISCLAIMER: This Product Specification Sheet was produced 01/2020. Every effort has been made to ensure that the content is accurate, however the contents are subject to change. Information contained in this Specification Sheet is: for general information only and does not purport to be comprehensive, current only at the time it is placed in this document compiled from manufacturer and industry sources; and not intended to provide nor make any recommendation upon which you should rely for any purpose whatsoever. Ezyquip Hire makes no warranty express or implied, including without limitation any warranty of merchantability or fitness for any particular purpose. Ezyquip Hire shall not be liable for any special, incidental, or consequential damages or loss of profits resulting from use of or misuse of the general information provided in this document.