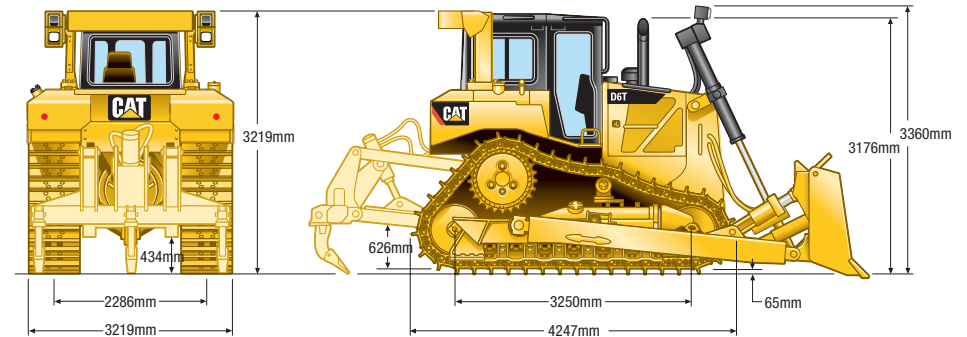


# LGP VPAT BLADE SWAMP DOZER | 22T

## PRODUCT SPECIFICATIONS

CAT

Engine			
Model	CAT C9.3 ACERT		
Gross Power – SAE J1995	171 kW / 229 hp		
Engine Power – ISO 14396	169 kW / 227 hp		
Net Power – SAE J1349	153 kW / 205 hp		
Engine Power – ISO 9249	153 kW / 205 hp		
Bore	115 mm		
Stroke	149 mm		
Displacement	9.3 L		
Weights			
Operating	21,715 kg		
Transmission			
1.5 Forward	3.8 kph / 2.3 mph	1.5 Reverse	4.8 kph / 3 mph
2.0 Forward	5.1 kph / 3.2 mph	2.0 Reverse	6.6 kph / 4.1 mph
2.5 Forward	6.6 kph / 4.1 mph	2.5 Reverse	8.4 kph / 5.2 mph
3.0 Forward	8.5 kph / 5.3 mph	3.0 Reverse	8.5 kph / 5.3 mph
3.5 Forward	11.4 kph / 7.1 mph	3.5 Reverse	14.6 kph / 9.0 mph
Blades			
LGP VPAT-Blade Capacity	4.20 m <sup>3</sup>		
LGP VPAT-Blade Width	4160 mm		
Fuel Burn			
Low	15.2 - 22.3 Litres per hour		
Medium	22.3 - 28.8 Litres per hour		
High	28.8 - 38.6 Litres per hour		



With following attachments add (to length measurement):

Ripper Multi-Shank (tip at ground line)	1370 mm
Winch	397 mm
VPAT Blade	1412 mm