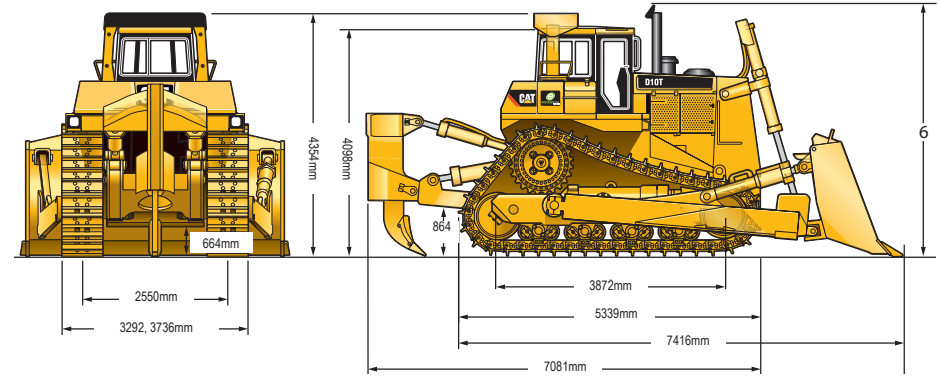


# D10 TRACK-TYPE TRACTOR | 60T

## PRODUCT SPECIFICATIONS

CAT

Engine			
Model	CAT C27 ACERT		
Gross Power - SAE J1995	482 kW / 646 hp		
Gross Power - ISO 14396	471 kW / 632 hp		
Net Power - SAE J1349/ ISO 9249 Min Fan	450 kW / 603 hp		
Net Power - SAE J1349/ ISO 9249	433 kW / 580 hp		
Net Power - 80/1269/EEC	433 kW / 580 hp		
Bore	137.2 mm / 5.4"		
Stroke	152.4 mm / 6"		
Displacement	27 L / 1647.6 in <sup>3</sup>		
Weights			
Operating	66,451 kg / 146,499 lb		
Transmission			
1st Forward	4 km/h / 2.5 mph	1st Reverse	5.2 km/h / 3.2 mph
2nd Forward	7.2 km/h / 4.5 mph	2nd Reverse	9 km/h / 5.6 mph
3rd Forward	12.7 km/h / 7.9 mph	3rd Reverse	15.8 km/h / 9.8 mph
Blades			
Type	10SU		
Capacity (SAE J1265)	18.5 m <sup>3</sup> / 24.2yd <sup>2</sup>		
Width (over end bits)	4,860 mm / 15'11"		
Height	2,120 mm / 6'11"		
Digging Depth	674 mm / 26.5"		
Ground Clearance	1,497 mm / 58.9"		
Maximum Tilt	993 mm / 39.1"		
Weight*	10,229 kg / 22551 lb		



DISCLAIMER: This Product Specification Sheet was produced 01/2020. Every effort has been made to ensure that the content is accurate, however the contents are subject to change. Information contained in this Specification Sheet is for general information only and does not purport to be comprehensive, current only at the time it is placed in this document compiled from manufacturer and industry sources; and not intended to provide nor make any recommendation upon which you should rely for any purpose whatsoever. Ezyquip Hire makes no warranty express or implied, including without limitation any warranty of merchantability or fitness for any particular purpose. Ezyquip Hire shall not be liable for any special, incidental, or consequential damages or loss of profits resulting from use of or misuse of the general information provided in this document.