

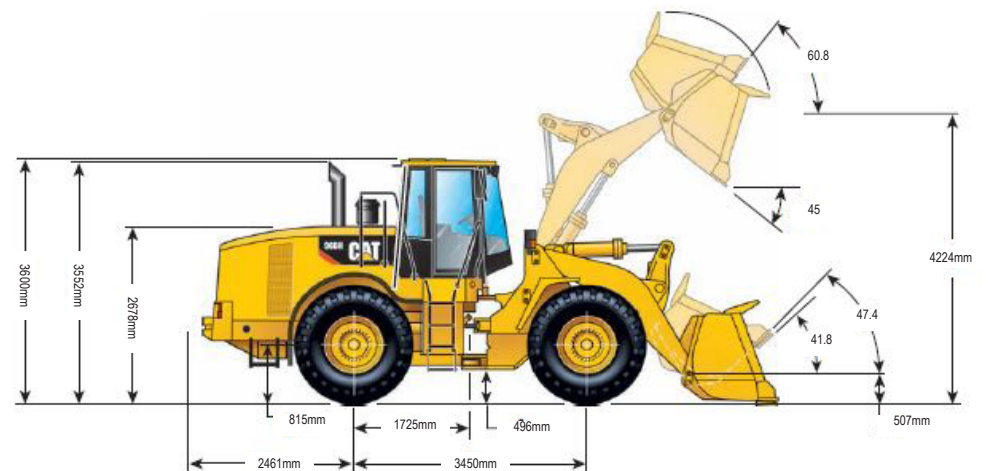
# 966H WHEEL LOADER | 8T

## PRODUCT SPECIFICATIONS

CAT

| Engine  |                            |                     |                     |
|---|----------------------------|---------------------|---------------------|
| Model   | CAT C11 ACERT              |                     |                     |
| Gross Power - SAE J1995   | 213 kW / 286 hp            |                     |                     |
| Net Power - ISO 9249  | 195 kW / 262 hp            |                     |                     |
| Net Power - SAE J1349   | 193 kW / 259 hp            |                     |                     |
| Net Power - 80/1269/EEC   | 195 kW / 262 hp            |                     |                     |
| Peak Torque (Net) @ 1,400 RPM   | 1215 Nm / 896 ft-lb        |                     |                     |
| Bore  | 130mm / 5.12"              |                     |                     |
| Stroke  | 140 mm / 5.51"             |                     |                     |
| Displacement  | 11.1 L / 677 <sup>u3</sup> |                     |                     |
| Weights   |                            |                     |                     |
| Operating   | 23,698 kg                  |                     |                     |
| For 4.25 m <sup>3</sup> (5.5 yd <sup>3</sup> ) general purpose bucket with BOCE |                            |                     |                     |
| Buckets   |                            |                     |                     |
| Bucket Capacities   | 3.4 - 4.6 m <sup>3</sup>   |                     |                     |
| Operating Specifications  |                            |                     |                     |
|   | Teeth                      | Teeth and Segments  | Bolt on Edges       |
| Rated Bucket Capacity (§)   | 3.65 m <sup>3</sup>        | 3.80 m <sup>3</sup> | 3.80 m <sup>3</sup> |
| Struck Capacity (§)   | 3.12 m <sup>3</sup>        | 3.27 m <sup>3</sup> | 3.27 m <sup>3</sup> |
| Width (§)   | 3,145 mm                   | 3,145 mm            | 3,059 mm            |
| Dump Clearance - At full lift and 45° discharge (§)                             | 2,968 mm                   | 2,968 mm            | 3,119 mm            |
| Reach - At full lift and 45° discharge (§)                                      | 1,411 mm                   | 1,411 mm            | 1,270 mm            |
| Reach - With lift arm horizontal and bucket level                               | 2,900 mm                   | 2,900 mm            | 2,695 mm            |
| Digging Depth (§)   | 78 mm                      | 108 mm              | 108 mm              |
| Overall Length  | 9,038 mm                   | 9,038 mm            | 8,813 mm            |
| Overall Height - With bucket at full raise                                      | 5,814 mm                   | 5,814 mm            | 5,814 mm            |
| Loader Clearance Circle Radius - With bucket in carry position (§)              | 14,576 mm                  | 14,576 mm           | 14,550 mm           |
| Static Tipping Load - Straight*   | 17,649 mm                  | 17,290 mm           | 17,475 mm           |
| Static Tipping Load - Full 37° turn   | 15,717 mm                  | 15,375 mm           | 15,560 mm           |
| Breakout Force** (§)  | 208 kN                     | 193 kN              | 195 kN              |
| Operating Weight* (§)   | 23,576 kg                  | 23,728 kg           | 23,588 kg           |

| Transmission                          |                             |
|---------------------------------------|-----------------------------|
| Forward 1                             | 6.7 km/h / 4.2 mph          |
| Forward 2                             | 12.6 km/h / 7.8 mph         |
| Forward 3                             | 22.1 km/h / 13.7 mph        |
| Forward 4                             | 37.4 km/h / 23.2 mph        |
| Reverse 1                             | 7.4 km/h / 4.6 mph          |
| Reverse 2                             | 13.9 km/h / 8.6 mph         |
| Reverse 3                             | 24.3 km/h / 15.1 mph        |
| Reverse 4                             | 37.4 km/h / 23.2 mph        |
| Maximum Travel Speeds (26.5-25 tyres) |                             |
| Fuel Burn                             |                             |
| Low                                   | 9.6 - 13.6 Litres per hour  |
| Medium                                | 13.6 - 17.0 Litres per hour |
| High                                  | 17.0 - 20.8 Litres per hour |



DISCLAIMER: This Product Specification Sheet was produced 01/2020. Every effort has been made to ensure that the content is accurate, however the contents are subject to change. Information contained in this Specification Sheet is: for general information only and does not purport to be comprehensive, current only at the time it is placed in this document compiled from manufacturer and industry sources; and not intended to provide nor make any recommendation upon which you should rely for any purpose whatsoever. Ezyquip Hire makes no warranty express or implied, including without limitation any warranty of merchantability or fitness for any particular purpose. Ezyquip Hire shall not be liable for any special, incidental, or consequential damages or loss of profits resulting from use of or misuse of the general information provided in this document.