

930K WHEEL LOADER | 13T

PRODUCT SPECIFICATIONS

CAT

Engine	
Model	CAT C6.6 ACERT™
Maximum Gross Power ISO 14396	119 kW / 160 hp
Maximum Gross Power ISO 14396 (DIN)	119 kW / 162 hp
Rated Net Power @ 1800 rpm	
SAE J1349	115 kW / 154 hp
ISO 9249/EEC 80/1269	116 kW / 156 hp
ISO 9249 (DIN)	116 kW / 158 hp
Maximum Gross Torque - ISO 14349	775 Nm / 571 ft-lb
Maximum Net Torque	
SAE J1349	748 Nm / 551 ft-lb
ISO 9249/EEC 80/1269	756 Nm / 557 ft-lb
Bore	105mm / 4"
Stroke	172mm / 5"
Displacement	6.6 L / 402 ³

Cat C6.6 engine meets U.S. EPA Tier 4 Interim (EU Stage IIIB) emission requirements.

Weights	
Operating Weight - Standard Lift	13,829 kg
Operating Weight - High Lift	14,077 kg

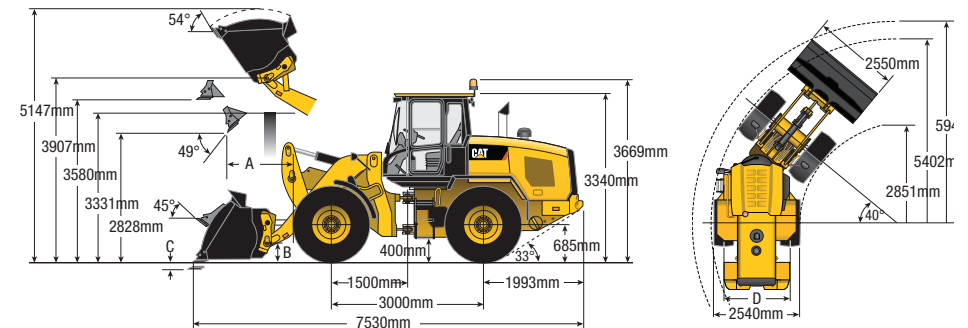
Buckets	
Bucket Capacities - General Purpose Bucket	2.1 - 2.7 m ³

Operating Specifications	
Tipping Load - Straight (ISO 14397-1)	9,803 kg / 21,605 lb
Tipping Load - Full turn (ISO 14397-1)	8,369 kg / 18,444 lb
Clearance - Full lift and 45 degree dump	2,828 mm / 9 ft 3"
Reach - Full lift and 45 degree dump	1,064 mm / 3 ft 5"
Steering Articulation Angle (each direction)	40 degrees

Transmission	
Forward 1	1 - 13 km/h / 0.6-8 mph
Forward 2	13 km/h / 8 mph
Forward 3	27 km/h / 17 mph
Forward 4	40 km/h / 25 mph
Reverse 1	1-13 km/h / 0.6-8 mph
Reverse 2	13 km/h / 8 mph
Reverse 3	27 km/h / 17 mph
Reverse 4	40km/h / 25 mph

*Creeper control allows maximum speed range adjustability from 1km/h (0.6 mph) to 13 km/h (8mph) in Range 1 through the secondary display, when equipped. Factory default is 7 km/h (4.4 mph)

Fuel Burn	
Low	3.6 - 6.2 Litres per hour
Medium	5.8 - 9.3 Litres per hour
High	9.0 - 12.5 Litres per hour



A Reach: bucket at 45°	1064mm
B Carry height: bucket pin	458mm
C Dig depth	100mm
D Width: tread center	1930mm

DISCLAIMER: This Product Specification Sheet was produced 01/2020. Every effort has been made to ensure that the content is accurate, however the contents are subject to change. Information contained in this Specification Sheet is for general information only and does not purport to be comprehensive, current only at the time it is placed in this document compiled from manufacturer and industry sources; and not intended to provide nor make any recommendation upon which you should rely for any purpose whatsoever. Ezyquip Hire makes no warranty express or implied, including without limitation any warranty of merchantability or fitness for any particular purpose. Ezyquip Hire shall not be liable for any special, incidental, or consequential damages or loss of profits resulting from use of or misuse of the general information provided in this document.