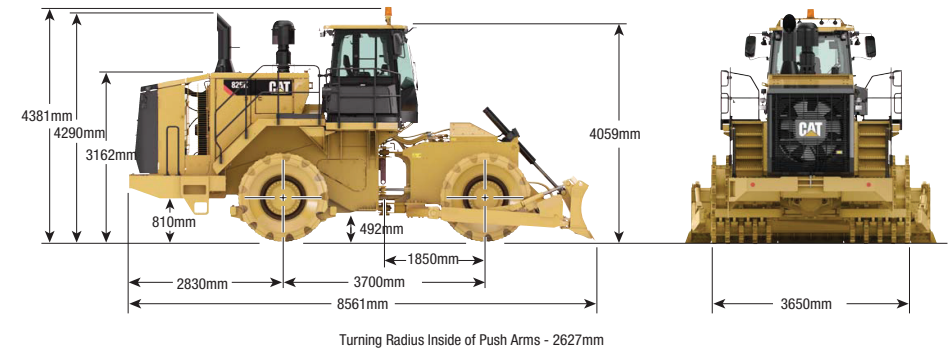


825K COMPACTOR | 35T

PRODUCT SPECIFICATIONS

CAT

| | |
|--|---|
| Engine | CAT C15 ACERT |
| Emissions | Tier 4 Final/Stage IV Final or Tier 3/Stage IIIA equivalent |
| Rated Power (SAE J1349) | 302 kW / 405 hp |
| Rated Power (Net ISO9249) | 302 kW / 405 hp |
| Gross Power (SAEJ1995) | 324 kW / 435 hp |
| Net Power - Direct Drive – Gross Power | 307 kW / 412 hp |
| Direct Drive – Torque Rise | 33% |
| Converter Drive – Gross Power | 324 kW / 435 hp |
| Converter Drive – Torque Rise | 8.5% |
| Maximum Net Torque @ 1,300 rpm | 2,005 Nm |
| Bore | 137.2 mm |
| Stroke | 171.4 mm |
| Displacement | 15.2 L |
| High Idle Speed | 2,300 rpm |
| Low Idle Speed | 800 rpm |
| Weights | |
| Max Operating Weight | 35,528 kg |
| Transmission | |
| Forward 1 | 5.5 km/hr |
| Forward 2 | 9.7 km/hr |
| Forward 3 | 17.2 km/hr |
| Reverse 1 | 6.2 km/hr |
| Reverse 2 | 11.1 km/hr |
| Reverse 3 | 19.7 km/hr |
| Fuel Burn | |
| Low | 37.8 - 43.8 Litres per hour |
| Medium | 53.7 - 67.3 Litres per hour |
| High | 63.7 - 69.7 Litres per hour |



DISCLAIMER: This Product Specification Sheet was produced 01/2020. Every effort has been made to ensure that the content is accurate, however the contents are subject to change. Information contained in this Specification Sheet is: for general information only and does not purport to be comprehensive, current only at the time it is placed in this document compiled from manufacturer and industry sources; and not intended to provide nor make any recommendation upon which you should rely for any purpose whatsoever. Ezyquip Hire makes no warranty express or implied, including without limitation any warranty of merchantability or fitness for any particular purpose. Ezyquip Hire shall not be liable for any special, incidental, or consequential damages or loss of profits resulting from use of or misuse of the general information provided in this document.