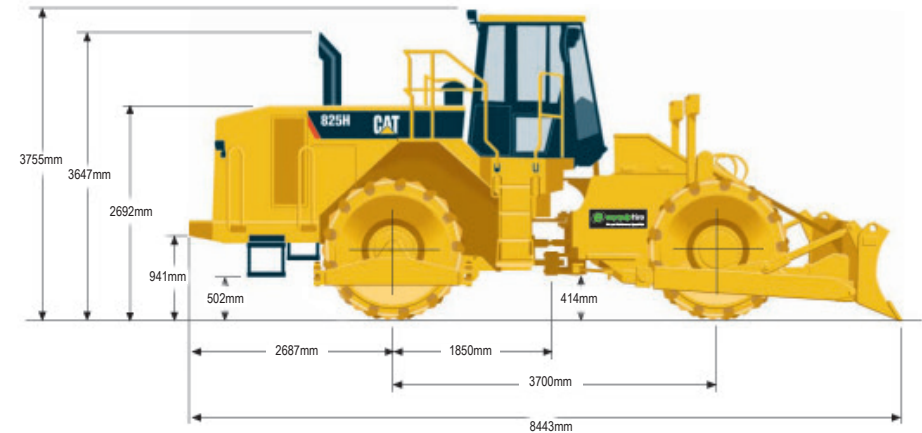


# 825H SOIL COMPACTOR | 32T

## PRODUCT SPECIFICATIONS

CAT

Engine	
Model	CAT C15 with ACERT® Technology
Gross Power	299 kW / 401 hp
Flywheel Power	264 kW / 354 hp
ISO 9249	264 kW / 354 hp
SAE J1349	261 kW / 350 hp
EEC 80/1269	264 kW / 354 hp
Bore	137 mm / 5.4"
Stroke	171 mm / 6.7"
Displacement	15.2 L / 928" <sup>3</sup>
Weights	
Operating Weight	32,733.04 kg / 72,164.0 lb
Transmission	
Forward 1	5.3 kph / 3.3 mph
Forward 2	9.3 kph / 5.8 mph
Forward 3	15.6 kph / 9.7 mph
Reverse 1	6.1 kph / 3.8 mph
Reverse 2	10.6 kph / 6.6 mph
Reverse 3	17.2 kph / 10.7 mph
Fuel Burn	
Low	37.8 - 43.8 Litres per hour
Medium	53.7 - 67.3 Litres per hour
High	63.7 - 69.7 Litres per hour



DISCLAIMER: This Product Specification Sheet was produced 01/2020. Every effort has been made to ensure that the content is accurate, however the contents are subject to change. Information contained in this Specification Sheet is for general information only and does not purport to be comprehensive, current only at the time it is placed in this document compiled from manufacturer and industry sources; and not intended to provide nor make any recommendation upon which you should rely for any purpose whatsoever. Ezyquip Hire makes no warranty express or implied, including without limitation any warranty of merchantability or fitness for any particular purpose. Ezyquip Hire shall not be liable for any special, incidental, or consequential damages or loss of profits resulting from use of or misuse of the general information provided in this document.