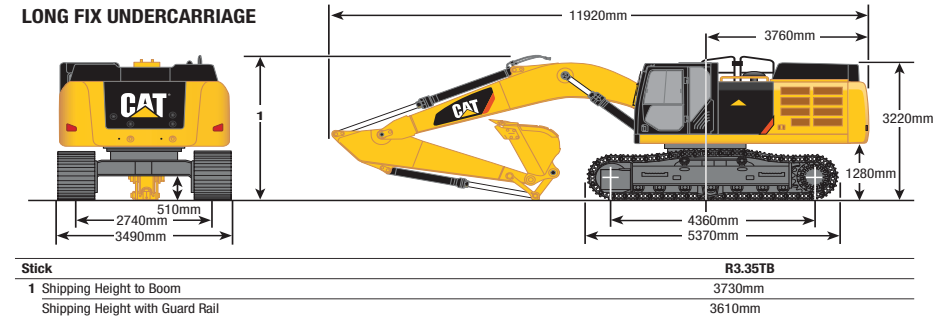


349EL HYDRAULIC EXCAVATOR | 52T

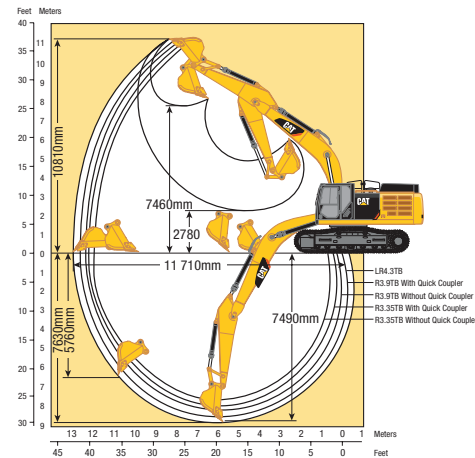
PRODUCT SPECIFICATIONS

CAT

Engine	
Model	CAT C13 ACERT
Engine Power (ISO 14396)	317 kW / 425 hp
Net Power (SAE J1349/ISO 9249)	295 kW / 396 hp
Bore	130 mm
Stroke	157 mm
Displacement	12.5 L
Weights	
Maximum Weight**	52,600 kg
*6.9 m (22'8") HD Reach boom, R2.9TB (9'6") HD stick, 9.0 mt (9.9 t) counterweight, Long FIX undercarriage, 2.41 m ³ HD bucket, 600 mm (24") DG shoes.	
Fuel Burn	
Low	15.0 - 30.5 Litres per hour
Medium	30.5 - 45.5 Litres per hour
High	45.5 - 60.5 Litres per hour



WORKING RANGE - LONG FIX UNDERCARRIAGE



DISCLAIMER: This Product Specification Sheet was produced 01/2020. Every effort has been made to ensure that the content is accurate, however the contents are subject to change. Information contained in this Specification Sheet is for general information only and does not purport to be comprehensive, current only at the time it is placed in this document compiled from manufacturer and industry sources; and not intended to provide nor make any recommendation upon which you should rely for any purpose whatsoever. Ezyquip Hire makes no warranty express or implied, including without limitation any warranty of merchantability or fitness for any particular purpose. Ezyquip Hire shall not be liable for any special, incidental, or consequential damages or loss of profits resulting from use of or misuse of the general information provided in this document.