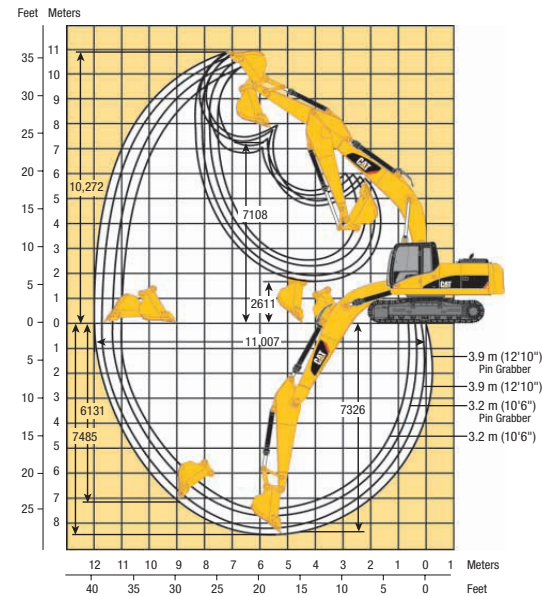
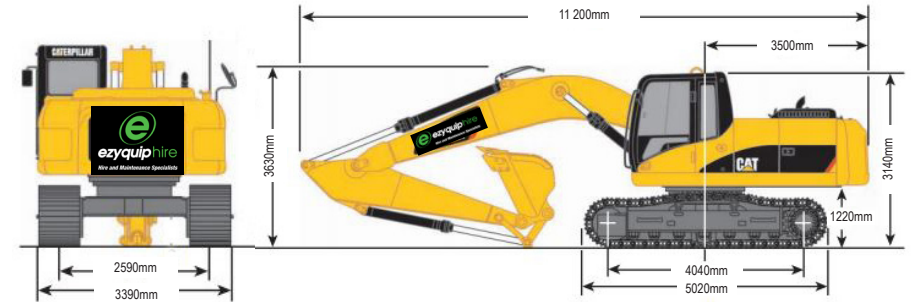


336DL HYDRAULIC EXCAVATOR | 35T

PRODUCT SPECIFICATIONS

CAT

| Engine | |
|---|------------------------------|
| Model | CAT C9 with ACERT Technology |
| Net Flywheel Power | 200 kW |
| Net Power – ISO 9249 | 200 kW |
| Bore | 112 mm |
| Stroke | 149 mm |
| Displacement | 8.8 L |
| Weights | |
| Operating Weight – Long Undercarriage | 35,280 kg |
| Reach boom, R3.2DB Stick, 1.4 m ³ Bucket, 600 mm Shoes | |
| Reach boom, R3.2DB Stick, 1.5 m ³ Bucket, 700 mm Shoes | |
| Fuel Burn | |
| Low | 11.5 - 23.0 Litres per hour |
| Medium | 23.0 - 34.5 Litres per hour |
| High | 34.5 - 45.5 Litres per hour |



DISCLAIMER: This Product Specification Sheet was produced 01/2020. Every effort has been made to ensure that the content is accurate, however the contents are subject to change. Information contained in this Specification Sheet is for general information only and does not purport to be comprehensive, current only at the time it is placed in this document compiled from manufacturer and industry sources, and not intended to provide nor make any recommendation upon which you should rely for any purpose whatsoever. Ezyquip Hire makes no warranty express or implied, including without limitation any warranty of merchantability or fitness for any particular purpose. Ezyquip Hire shall not be liable for any special, incidental, or consequential damages or loss of profits resulting from use of or misuse of the general information provided in this document.