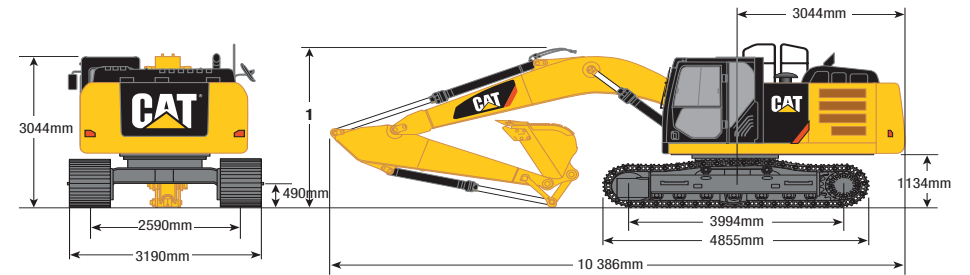


329EL HYDRAULIC EXCAVATOR | 30T

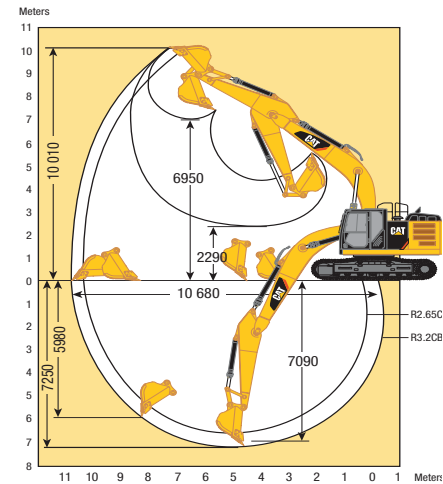
PRODUCT SPECIFICATIONS

CAT

| Engine | |
|--|-----------------------------|
| Model | CAT C7.1 with ACERT |
| Net Flywheel Power | 161 kW / 219 hp |
| Net Power – ISO 14396 | 179 kW / 240 hp |
| Bore | 105 mm |
| Stroke | 135 mm |
| Displacement | 7.01 L |
| Weights | |
| Operating Weight (max)** | 30,959 kg |
| *Long Undercarriage, 6.15 m reach boom, R2.6CB2 stick, 5.8 mt counterweight, 1.33 m ³ bucket, 600 mm TG shoes. ** Long Undercarriage, 5.55 m mass boom, R2.5DB stick, 5.8 mt counterweight, 1.87 m ³ bucket, 800 mm TG shoes. | |
| Fuel Burn | |
| Low | 8.5 - 17.0 Litres per hour |
| Medium | 17.0 - 25.5 Litres per hour |
| High | 25.5 - 34.5 Litres per hour |



| Stick | R3.2CB2 (10'6") |
|--|-----------------|
| 1 Shipping Height* | 3372mm |
| Shipping Height with Guard Rail (without fronts) | 3328mm |
| Shipping Height with Top Guard (without fronts) | 3240mm |



DISCLAIMER: This Product Specification Sheet was produced 01/2020. Every effort has been made to ensure that the content is accurate, however the contents are subject to change. Information contained in this Specification Sheet is: for general information only and does not purport to be comprehensive, current only at the time it is placed in this document compiled from manufacturer and industry sources; and not intended to provide nor make any recommendation upon which you should rely for any purpose whatsoever. Ezyquip Hire makes no warranty express or implied, including without limitation any warranty of merchantability or fitness for any particular purpose. Ezyquip Hire shall not be liable for any special, incidental, or consequential damages or loss of profits resulting from use of or misuse of the general information provided in this document.