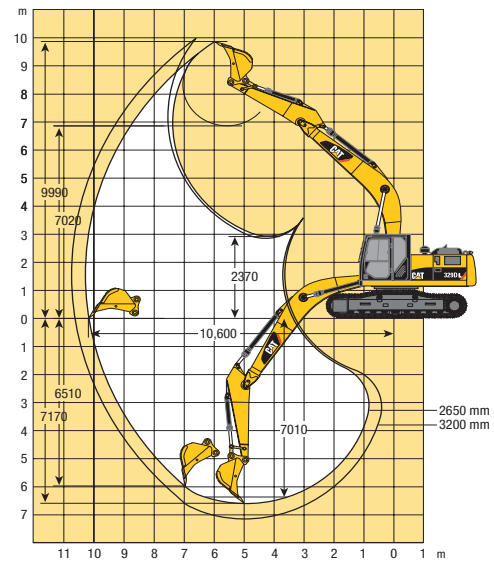
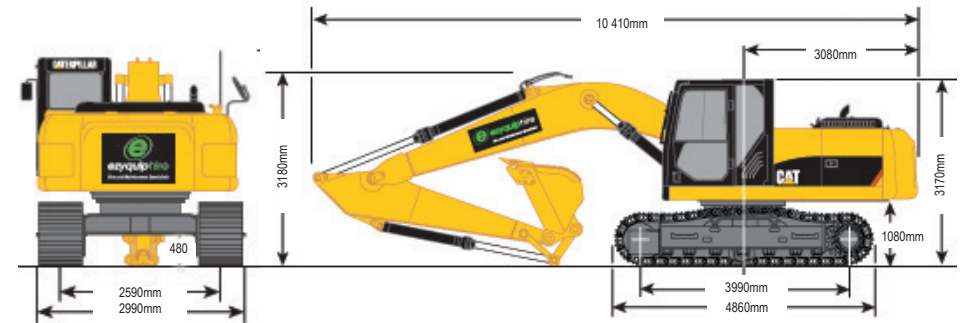


329DL HYDRAULIC EXCAVATOR | 30T

PRODUCT SPECIFICATIONS

CAT

Engine	
Model	CAT C7 with ACERT Technology
Net Flywheel Power	152 kW
Net Power – ISO 9249	152 kW
Bore	110 mm
Stroke	127 mm
Displacement	7.2 L
Weights	
Operating Weight – Long Undercarriage	29,560 kg
Fuel Burn	
Low	8.0 - 16.0 Litres per hour
Medium	16.0 - 24.0 Litres per hour
High	24.0 - 32.0 Litres per hour



DISCLAIMER: This Product Specification Sheet was produced 01/2020. Every effort has been made to ensure that the content is accurate, however the contents are subject to change. Information contained in this Specification Sheet is: for general information only and does not purport to be comprehensive, current only at the time it is placed in this document compiled from manufacturer and industry sources; and not intended to provide nor make any recommendation upon which you should rely for any purpose whatsoever. Ezyquip Hire makes no warranty express or implied, including without limitation any warranty of merchantability or fitness for any particular purpose. Ezyquip Hire shall not be liable for any special, incidental, or consequential damages or loss of profits resulting from use of or misuse of the general information provided in this document.