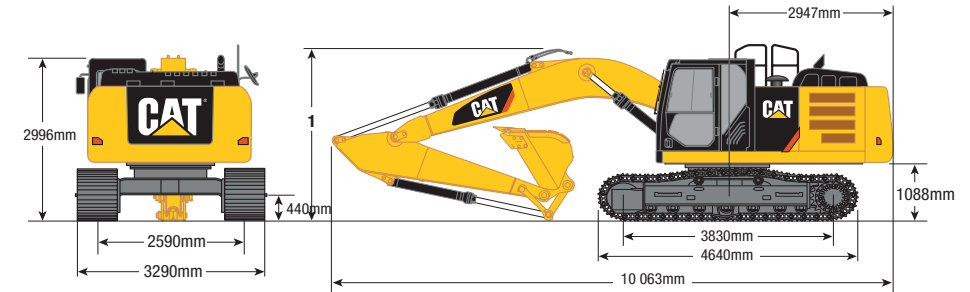


# 324EL HYDRAULIC EXCAVATOR | 25T

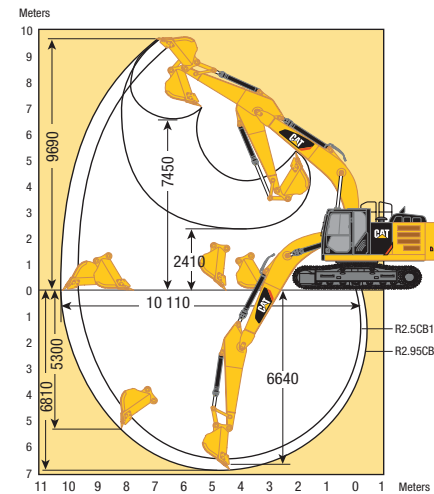
## PRODUCT SPECIFICATIONS

CAT

Engine	
Model	CAT C7.1 with ACERT
Net Power – ISO 14396 (metric)	151 kW / 205 hp
Net Power – ISO 14396 (imperial)	151 kW / 202 hp
Bore	105 mm
Stroke	135 mm
Displacement	7.01 L
Weights	
Operating Weight (min)*	25,127 kg
Operating Weight (max)**	26,307 kg
*Long Undercarriage, 5.9 m (19'4") reach boom, R2.5CB1 (8'2") stick, 4.0 mt (4.4 t) counterweight, 1.33 m <sup>3</sup> bucket, 600 mm (24") DG shoes. ** Long Undercarriage 5.3 m (17'5") mass boom, M2.5DB (8'2") stick, 4.0 mt (4.4 t) counterweight, 1.87 m <sup>3</sup> bucket, 790 mm (31") TG shoes.	
Fuel Burn	
Low	7.0 - 14.5 Litres per hour
Medium	14.5 - 21.5 Litres per hour
High	21.5 - 29.0 Litres per hour



	HD Reach Boom 5.9m
<b>Stick</b>	<b>R2.95CB1</b>
1 Shipping Height*	3220mm
Shipping Height with Guard Rail (without fronts)	3283mm
Shipping Height with Top Guard (without fronts)	3190mm



DISCLAIMER: This Product Specification Sheet was produced 01/2020. Every effort has been made to ensure that the content is accurate, however the contents are subject to change. Information contained in this Specification Sheet is: for general information only and does not purport to be comprehensive, current only at the time it is placed in this document compiled from manufacturer and industry sources; and not intended to provide nor make any recommendation upon which you should rely for any purpose whatsoever. Ezyquip Hire makes no warranty express or implied, including without limitation any warranty of merchantability or fitness for any particular purpose. Ezyquip Hire shall not be liable for any special, incidental, or consequential damages or loss of profits resulting from use of or misuse of the general information provided in this document.