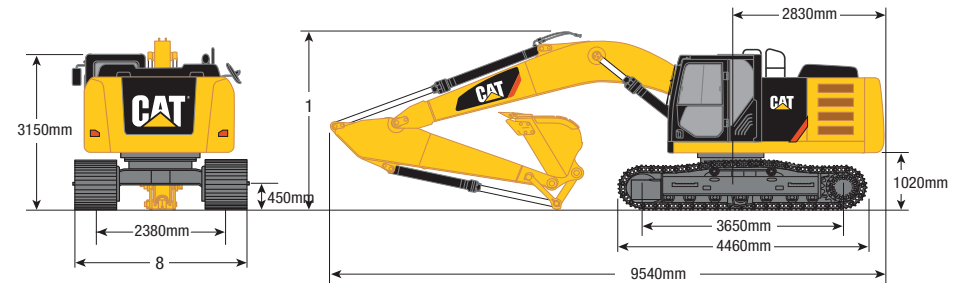


# 320EL HYDRAULIC EXCAVATOR | 23T

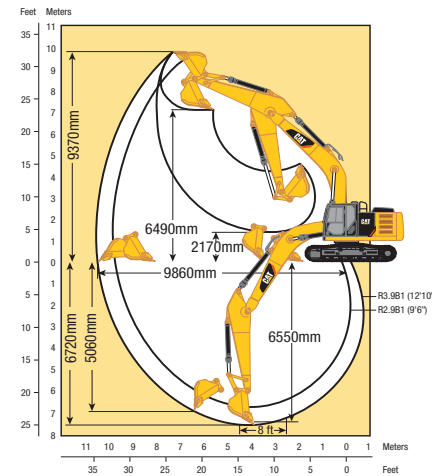
## PRODUCT SPECIFICATIONS

CAT

Weights	
Operating Weight (max)	23,500 kg
Engine	
Model	CAT C6.6 ACERT
Net Power ISO14396	112 kW / 152 hp
Net Power ISO 9249	114 kW / 155 hp
Bore	105 mm
Stroke	127 mm
Displacement	6.6 L
Fuel Burn	
Low	5.4 - 10.9 Litres per hour
Medium	10.9 - 16.3 Litres per hour
High	16.3 - 21.8 Litres per hour



Stick	2.9B1
1 Shipping Height without Guard Rail	3130mm
Shipping Height with Guard Rail	3160mm
Shipping Height with Top Guard, without Guard Rail	3150mm
8 Transport Width	
600 mm Shoes	2980mm
700 mm Shoes	3080mm
790 mm Shoes	3170mm



DISCLAIMER: This Product Specification Sheet was produced 01/2020. Every effort has been made to ensure that the content is accurate, however the contents are subject to change. Information contained in this Specification Sheet is for general information only and does not purport to be comprehensive, current only at the time it is placed in this document compiled from manufacturer and industry sources; and not intended to provide nor make any recommendation upon which you should rely for any purpose whatsoever. Ezyquip Hire makes no warranty express or implied, including without limitation any warranty of merchantability or fitness for any particular purpose. Ezyquip Hire shall not be liable for any special, incidental, or consequential damages or loss of profits resulting from use of or misuse of the general information provided in this document.