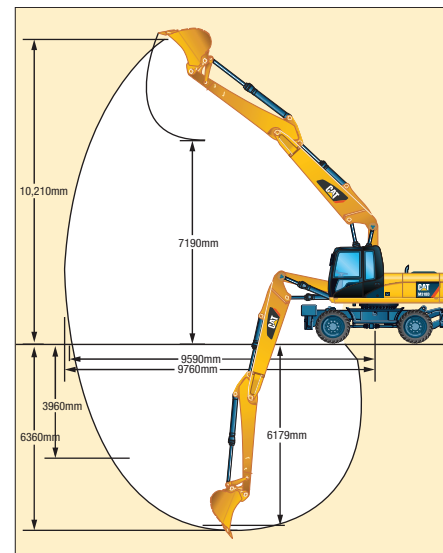
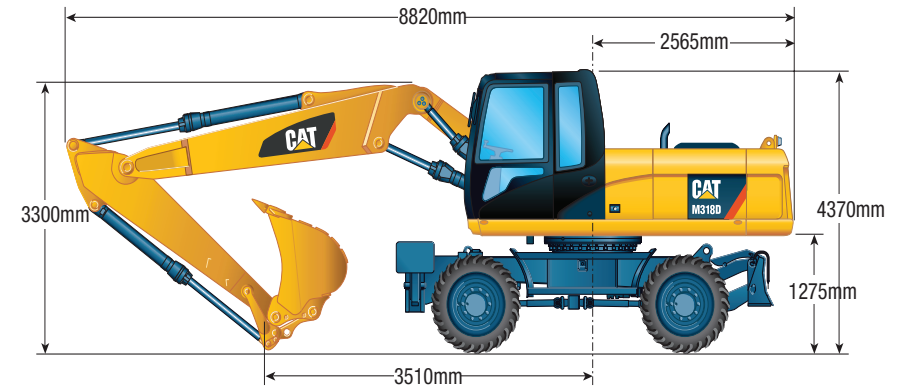


318D WHEELED EXCAVATOR | 19T

PRODUCT SPECIFICATIONS

CAT

Engine	
Model	CAT C6.6 VA Boom with ACERT Technology
Gross Engine Power	130 kW / 174 hp
Net Power (80/1269/EEC / ISO 9249)	124 kW / 166 hp
Bore	105 mm
Stroke	157 mm
Displacement	6.6 L
Weights	
Maximum Operating Weight*	19,100 kg
*VA Boom, Front and Rear Outriggers. Machine weight with medium stick, 4000 kg (8,810 lb) counterweight, with operator and full fuel tank, without work tool. Weight varies depending on configuration.	
Fuel Burn	
Low	9.0 - 13.0 Litres per hour
Medium	13.0 - 18.0 Litres per hour
High	18.0 - 22.0 Litres per hour



Bucket Forces (ISO 6015) 126 kN

DISCLAIMER: This Product Specification Sheet was produced 01/2020. Every effort has been made to ensure that the content is accurate, however the contents are subject to change. Information contained in this Specification Sheet is: for general information only and does not purport to be comprehensive, current only at the time it is placed in this document compiled from manufacturer and industry sources; and not intended to provide nor make any recommendation upon which you should rely for any purpose whatsoever. Ezyquip Hire makes no warranty express or implied, including without limitation any warranty of merchantability or fitness for any particular purpose. Ezyquip Hire shall not be liable for any special, incidental, or consequential damages or loss of profits resulting from use of or misuse of the general information provided in this document.