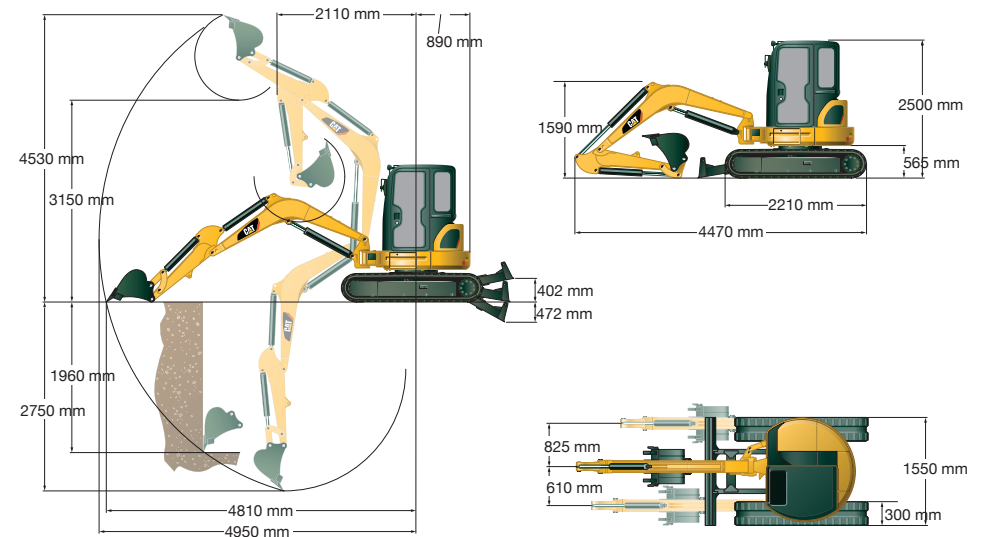


303E CR MINI EXCAVATOR | 3.5T

PRODUCT SPECIFICATIONS

CAT

Weights	
Operating Weight - With cab	3,530 kg
*Weight includes counterweight, rubber tracks, bucket, operator, full fuel and auxiliary lines.	
Drive System	
Travel Speed – High	4.5 km/h
Travel Speed – Low	2.4 km/h
Max Traction Force – Low Speed	30.9 kN
Max Traction Force – High Speed	15.2 kN
Ground Pressure	32.2 kPa
Engine	
Model	CAT C1.3
Rated Net Power @ 2,400 rpm ISO 9249/EEC 80/1269	17.5 kW / 23.5 hp
Gross Power ISO 14396	18.5 kW / 24.8 hp
Bore	78 mm / 3.1"
Stroke	88 mm / 3.5"
Displacement	1.26 L / 77 ^{cm} ³
Swing System	
Machine Swing Speed	9 rpm
Boom Swing - Left*	80°
Boom Swing - Right	50°
*Automatic swing brake, spring applied, hydraulic release.	
Blade	
Width	1,550 mm / 60"
Height	335 mm / 13"
Dig Depth	472 mm / 19"
Lift Height	402 mm / 16"
Fuel Burn	
Low	1.1 - 2.3 Litres per hour
Medium	2.3 - 3.4 Litres per hour
High	3.4 - 4.6 Litres per hour



DISCLAIMER: This Product Specification Sheet was produced 01/2020. Every effort has been made to ensure that the content is accurate, however the contents are subject to change. Information contained in this Specification Sheet is for general information only and does not purport to be comprehensive, current only at the time it is placed in this document compiled from manufacturer and industry sources; and not intended to provide nor make any recommendation upon which you should rely for any purpose whatsoever. Ezyquip Hire makes no warranty express or implied, including without limitation any warranty of merchantability or fitness for any particular purpose. Ezyquip Hire shall not be liable for any special, incidental, or consequential damages or loss of profits resulting from use of or misuse of the general information provided in this document.