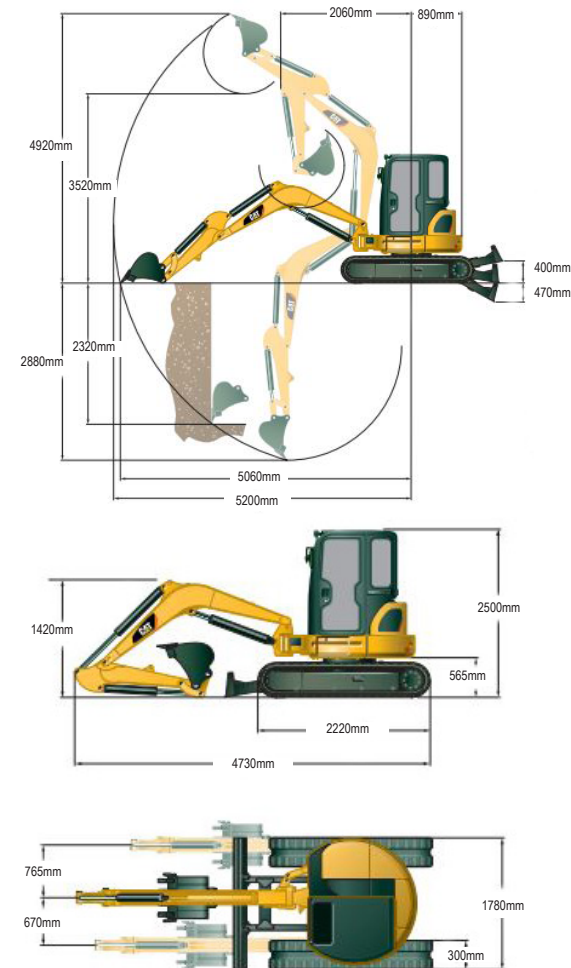


303.5E MINI HYDRAULIC | 3.5T

PRODUCT SPECIFICATIONS

CAT

Weights	
Operating Weight - With cab	3,692 kg
NOTE: Weight includes rubber tracks, bucket, operator, full fuel and auxiliary lines.	
Drive System	
Travel Speed - High	4.6 km/h / 2.8 mph
Travel Speed - Low	2.6 km / 1.6 mph
Maximum Traction Force - Low speed	31 kN
Maximum Traction Force - High speed	16.9 kN
Ground Pressure	32.1 kPa
Engine	
Model	CAT C1.8
Rated Net Power	23.6 kW / 31.6 hp
Gross Power	24.8 kW / 33.3 hp
Bore	87 mm / 3.4"
Stroke	102.4 mm / 4"
Displacement	1.8 L
Swing System	
Machine Swing Speed	9 rpm
Boom Swing - Left (without stop)	80°
Boom Swing (with stop)	70°
Swing Right	50°
Blade	
Width	1780 mm / 70"
Height	325 mm / 12.8"
Dig Depth	470 mm / 18.5"
Lift Height	400 mm / 16.5"
Fuel Burn	
Low	1.4 - 2.8 Litres per hour
Medium	2.8 - 4.3 Litres per hour
High	4.3 - 5.7 Litres per hour



DISCLAIMER: This Product Specification Sheet was produced 01/2020. Every effort has been made to ensure that the content is accurate, however the contents are subject to change. Information contained in this Specification Sheet is for general information only and does not purport to be comprehensive, current only at the time it is placed in this document compiled from manufacturer and industry sources; and not intended to provide nor make any recommendation upon which you should rely for any purpose whatsoever. Ezyquip Hire makes no warranty express or implied, including without limitation any warranty of merchantability or fitness for any particular purpose. Ezyquip Hire shall not be liable for any special, incidental, or consequential damages or loss of profits resulting from use of or misuse of the general information provided in this document.