

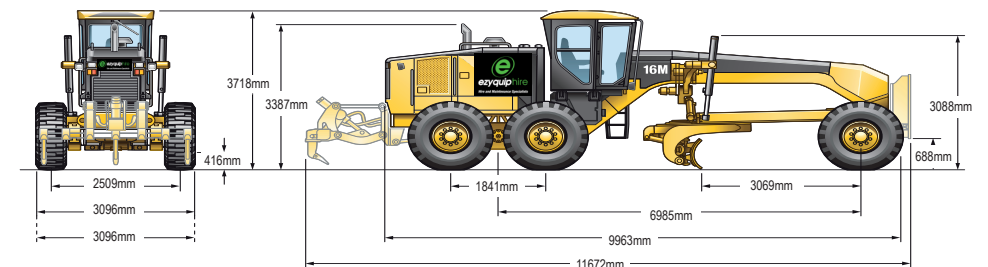
# 16M MOTOR GRADER | 27T

## PRODUCT SPECIFICATIONS

CAT

Engine			
Model	CAT C13 ACERT VHP		
Base Power (1st gear) - Net	221 kW / 297 hp		
VHP Range – Net	221 - 233 kW / 297 - 332 hp		
VHP Plus Range – Net	221 - 248 kW / 297 - 332 hp		
Displacement	12.5 L		
Bore	130 mm / 5.1"		
Stroke	157mm / 6.2"		
Torque Rise	46%		
Max Torque	1,712 Nm, 1,263 lb ft		
Speed @ Rated Power	2,000 rpm		
Number of Cylinders	6		
Derating Altitude	4,572 m / 15,000 ft		
Weights			
Gross Vehicle Weight – Maximum	37,550 kg / 82,784 lb		
Operating Specifications			
Top Speed – Forward	51.7 km/h / 32.1 mph		
Top Speed – Reverse	40.8 km/h / 25.3 mph		
Turning Radius - Outside front tyres	8.9 m / 29 ft 3 in		
Steering Range – left/right	47.5°		
Articulation Angle – left/right	20°		
Transmission			
1st Forward	4.5km/h / 2.8 mph	1st Reverse	3.6 km / 2.2 mph
2nd Forward	6.1km/h / 3.8 mph	2nd Reverse	6.6km/h / 4.1 mph
3rd Forward	8.9 km/h / 5.5 mph	3rd Reverse	9.7 km/h / 6.1 mph
4th Forward	12.3 km/h / 7.6 mph	4th Reverse	15 km/h / 9.3 mph
5th Forward	19.0 km/h / 11.8 mph	5th Reverse	28 km/h / 17.4 mph
6th Forward	25.7 km/h / 16 mph	6th Reverse	40.8 km/h / 25.3 mph
7th Forward	35.5 km/h / 22 mph		
8th Forward	51.7 km/h / 32.1 mph		
Blade Range			
Circle Centreshift – Right	597 mm / 23.5"		
Circle Centreshift – Left	647mm / 25.5"		
Moldboard Sideshift – Right	1,094 mm / 43.1"		
Moldboard Sideshift – Left	740 mm / 25.6"		
Maximum Blade Position Angle	65°		
Blade Tip Range – Forward / Backward	40° / 5°		

Maximum Shoulder Reach Outside of Tyres -right / left	2,587 mm / 2282 mm	101.9in / 90"
Maximum Lift Above Ground	395 mm / 15.6"	
Maximum Depth of Cut	488 mm / 19.2"	
Ripper		
Ripping Depth - Maximum	452 mm / 17.8"	
Ripper Shank Holders	7	
Ripper Shank Holder Spacing	445 - 500 mm / 17.5 - 20"	
Penetration Force	11,830 kg / 25,088 lb	
Pryout Force	17,467 kg / 38,508 lb	
Machine Length Increase - Beam Raised	1,610 mm / 63.4"	
Fuel Burn		
Low	8.3 - 12.5 Litres per hour	
Medium	12.5 - 20.0 Litres per hour	
High	20.0 - 29.1 Litres per hour	



DISCLAIMER: This Product Specification Sheet was produced 01/2020. Every effort has been made to ensure that the content is accurate, however the contents are subject to change. Information contained in this Specification Sheet is for general information only and does not purport to be comprehensive, current only at the time it is placed in this document compiled from manufacturer and industry sources; and not intended to provide nor make any recommendation upon which you should rely for any purpose whatsoever. Ezyquip Hire makes no warranty express or implied, including without limitation any warranty of merchantability or fitness for any particular purpose. Ezyquip Hire shall not be liable for any special, incidental, or consequential damages or loss of profits resulting from use of or misuse of the general information provided in this document.