

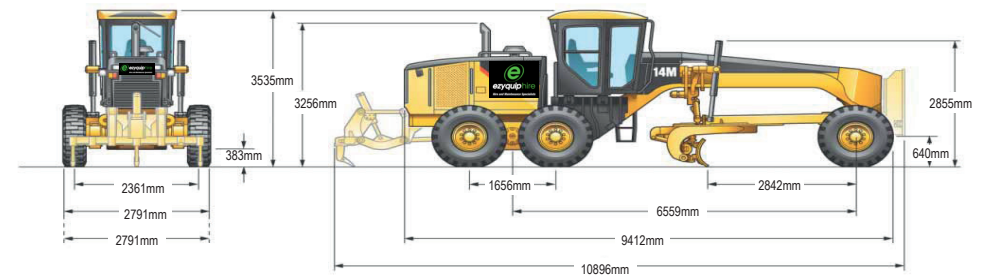
# 14M MOTOR GRADER | 22T

## PRODUCT SPECIFICATIONS

CAT

Engine			
Model	CAT C11 ACERT™ VHP		
Base Power (1st gear) - Net	193 kW		
VHP Range – Net	193 - 204 kW / 259 - 274 hp		
VHP Plus Range – Net	193 - 219 kW / 259 - 294 hp		
Displacement	11.1 L / 677 <sup>3</sup>		
Bore	130 mm / 4.3"		
Stroke	140 mm / 5.5"		
Torque Rise	26%		
Max Torque	1,422 Nm / 1,049 lb ft		
Speed @ Rated Power	1,800 rpm		
Number of Cylinders	6		
Derating Altitude	3,962 m / 13,000 ft		
Weights			
Gross Vehicle Weight – Max	29,936 kg / 65,998 lb		
Operating Specifications			
Top Speed – Forward	49.8 km/h / 31 mph		
Top Speed – Reverse	39.4 km/h / 24.5 mph		
Turning Radius - Outside front tyres	7.9 m / 25'11"		
Steering Range – left/right	47.5°		
Articulation Angle – left/right	20°		
Transmission			
1st Forward	4.3 km/h / 2.7 mph	1st Reverse	3.4 km/h / 2.1 mph
2nd Forward	5.9 km/h / 3.7 mph	2nd Reverse	6.4 km/h / 4 mph
3rd Forward	8.6 km/h / 5.3 mph	3rd Reverse	9.3 km/h / 5.8 mph
4th Forward	11.8 km/h / 7.3 mph	4th Reverse	14.5 km/h / 9 mph
5th Forward	18.3 km/h / 11.4 mph	5th Reverse	27.1 km/h / 16.9 mph
6th Forward	24.8 km/h / 15.4 mph	6th Reverse	39.4 km/h / 24.5 mph
7th Forward	34.2 km/h / 21.3 mph		
8th Forward	49.8 km/h / 31 mph		
Blade Range			
Circle Centreshift – Right	520 mm / 20.5"		
Circle Centreshift – Left	650 mm / 25.5"		
Moldboard Sideshift – Right	790 mm / 31.1"		
Moldboard Sideshift – Left	740 mm / 29.1"		

Maximum Blade Position Angle	65°		
Blade Tip Range – Forward/ Backward	40° / 5°		
Maximum Shoulder Reach Outside of tyres	- Right	2,279 mm	89.7"
	- Left	2,169mm	85.4"
Maximum Lift - Above ground	419mm / 17.3"		
Maximum Depth of Cut	438mm / 17.3"		
Ripper			
Ripping Depth - Maximum	401 mm / 15.8"		
Ripper Shank Holders	7		
Ripper Shank Holder Spacing - Minimum	373 mm / 15"		
Ripper Shank Holder Spacing - Maximum	472 mm / 19"		
Penetration Force	10,676 kg / 23,541 lb		
Pryout Force	11,804 kg / 26,028 lb		
Machine Length Increase - Beam Raised	1130 mm / 44.5"		



DISCLAIMER: This Product Specification Sheet was produced 01/2020. Every effort has been made to ensure that the content is accurate, however the contents are subject to change. Information contained in this Specification Sheet is: for general information only and does not purport to be comprehensive, current only at the time it is placed in this document compiled from manufacturer and industry sources; and not intended to provide nor make any recommendation upon which you should rely for any purpose whatsoever. Ezyquip Hire makes no warranty express or implied, including without limitation any warranty of merchantability or fitness for any particular purpose. Ezyquip Hire shall not be liable for any special, incidental, or consequential damages or loss of profits resulting from use of or misuse of the general information provided in this document.